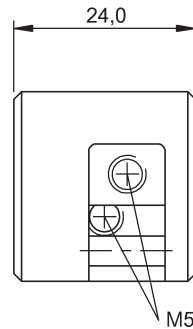
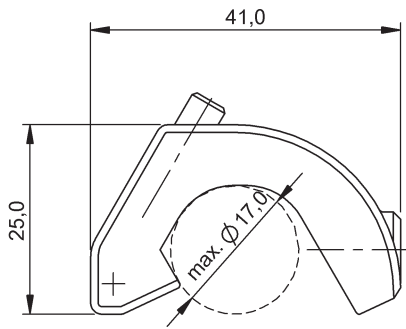


BMF 21-HW-10
BAM00KT



- BMF Mounting clamp
- BMF 21
- Aluminum
- Black anodized

General attributes

Application
Area of application

Basic standard
Mounting instruction
Scope of delivery

BMF 21
Piston diameter: any
Pneumatic cylinder with integrated tie rods (profile)
Pneumatic cylinder with tie rods
Dimensional allowance: DIN ISO 2768 m
827287
Mounting clamp
Mounting parts

Mechanical attributes

Ambient temperature Ta max.
Ambient temperature Ta min.
Clamping range
Material
Mounting of holder

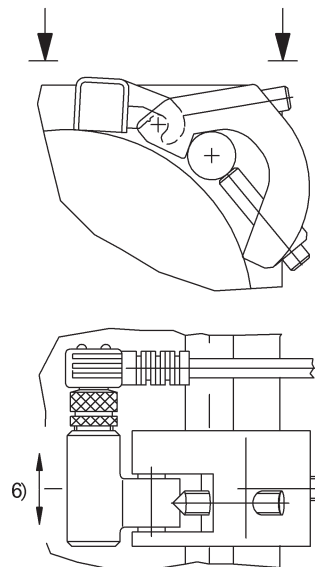
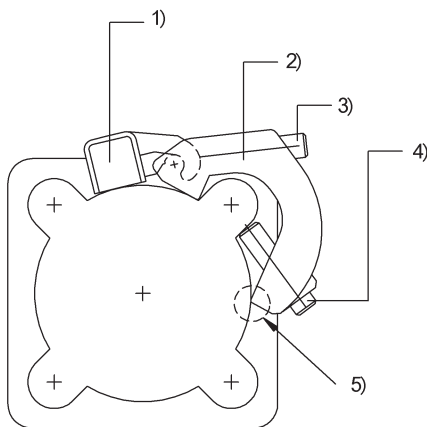
Mounting of sensor
Surface protection

85 °C
-40 °C
max. 17.0 mm
Aluminum
Grubscrew ISO 4026 M5x20-A2 or M5x25-A2
Grubscrew ISO 4026 M5x20-A2
Black anodized

Electrical attributes

Additional text

Magnetic field sensor can be replaced without removing the mounting bracket.
Long threaded pin: tie rod $\varnothing < 12$ mm
Short threaded pin: tie rod $\varnothing > 12$ mm / profile width 10...17 mm.



1) Magnetic field sensor 2) Mounting bracket 3) Sensor mount 4) Mount. bracket fixation 5) Bracket abutting 6) Fine adjustment ± 1 mm