

# VMA05

MANUAL HVMA05\*1

## IN/OUT shield for Arduino®

weleman  
MODULES



General purpose INPUT - OUTPUT shield for Arduino®

### Features

- For use with Arduino Due, Arduino Uno, Arduino Mega
- 6 analog inputs
- 6 digital input
- 6 relay contact outputs: 0.5A max 30V (\*)
- Indicator leds for relay outputs and digital inputs

### Specifications

- Analog inputs: 0..+5VDC
- Digital inputs: dry contact or open collector
- Relays: 12V
- Relay contacts: NO/NC 24VDC/1A max.
- Dimensions: 68 x 53mm / 2.67 x 2.08"

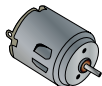
(\*) It is required to power the Arduino UNO (not supplied) with a 12V DC 500mA power supply (not supplied). This shield will not work with the Arduino Yun. Use the KA08 or VMA08 with the Arduino Yun.



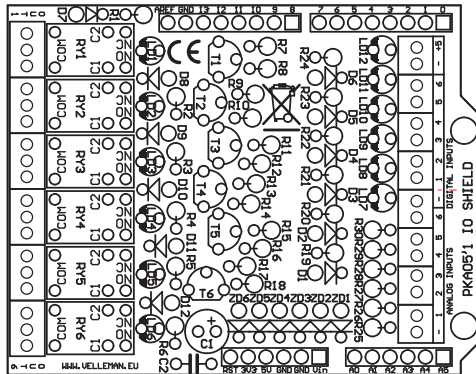


Participate our Velleman Projects Forum

**1 OUTPUT**  
MAX. 24VDC / 1A



6 RELAY OUTPUTS  
(Max. 24VDC/1A)



**2 DIGITAL INPUTS**



101011101011001...

...

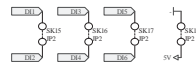
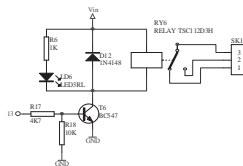
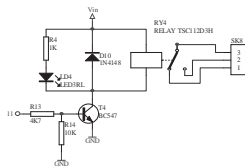
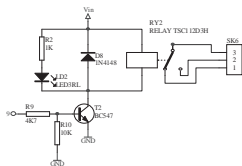
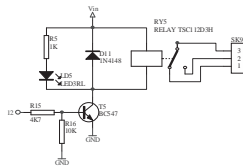
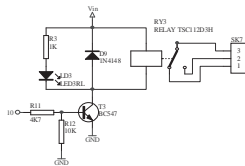
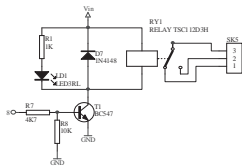
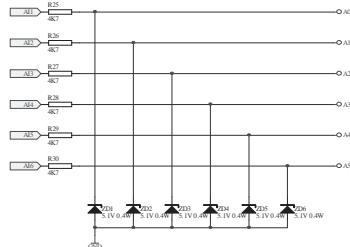
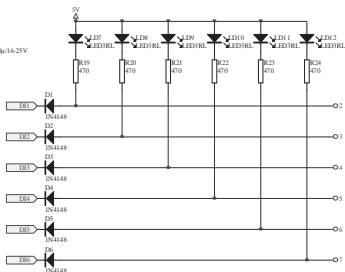
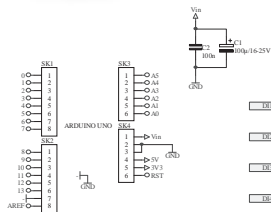
6 DIGITAL INPUTS

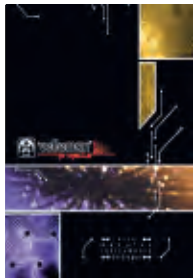
**3 ANALOG INPUTS** 0 ... 5V



6 ANALOG INPUTS

DOWNLOAD SAMPLE CODE FROM KA05 PAGE ON [WWW.VELLEMAN.BE](http://WWW.VELLEMAN.BE)





The new Velleman Projects catalogue is  
now available. Download your copy here:  
[www.vellemanprojects.eu](http://www.vellemanprojects.eu)



Modifications and typographical errors reserved - © Velleman nv. HVMA05 (rev.1)  
Velleman NV, Legen Heinweg 33 - 9890 Gavere.