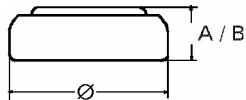


Data Sheet

Type Number 396
Designation IEC SR 59
System Silver oxide / Zinc /
 KOH - Electrolyte



Nominal Voltage 1,55 V
Typical Capacity C 25 mAh
 Load 20 kOhm, at 20°C down to 1.3 V

Weight (approx.) 0,55 g
Volume 0,11 ccm
Coding..... Manufacturing Month/Year by
 Letter Code

Temperature Ranges min max.
 Storage -10°C 65 °C
 Discharge -10°C 65°C

Dimensions min max.
 Diameter 7,55 7,9
 Height (A/B) 2,3 2,6

Segment Watch / High Drain

Main Applications Watch
 Photo
 Electronic

Typical Capacities (at 20°C)

Discharge Type	Load	End Voltage:	1.3 V
Continuous	20000 Ω	Time:	320 h
24h/d,7d/w		Capacity [mAh]:	25
Current [μA]:	78	Energy [MWh]:	39

All Data contained herein is for single cells

For battery applications, performance data may vary from single cell data, depending on specific battery configuration

VARTA Microbattery GmbH, Daimlerstr. 1, D-73479 Ellwangen/Jagst
 Tel.: (+49) 7961/921-0, Telefax: (+49) 7961/921-553

Subject to change without prior notice!
 Date of issue: 07.08.2003