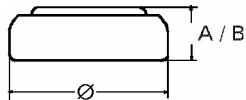


Data Sheet

Type Number 377
Designation IEC SR66
System Silver oxide / Zinc /
 NaOH - Electrolyte



Nominal Voltage 1,55 V
Typical Capacity C 24 mAh
 Load 20 kOhm, at 20°C down to 1.3 V

Weight (approx.) 0,39 g
Volume 0,094 ccm
Coding..... Manufacturing Month/Year by
 Letter Code

Temperature Ranges min max.
 Storage -10°C 65 °C
 Discharge -10°C 65°C

Dimensions min max.
 Diameter 6,7 6,8
 Height (A/B) 2,4 2,6

Segment Watch

Main Applications Watch
 Photo
 Electronic

Typical Capacities (at 20°C)

Discharge Type	Load	End Voltage:	1.3 V
Continuous 24h/d,7d/w Current [µA]:	20000 Ω 78	Time: Capacity [mAh]: Energy [MWh]:	306 h 24 37