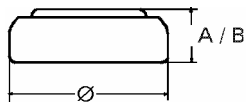


Data Sheet

Type Number 371
Designation IEC SR 69
System Silver oxide / Zinc /
 NaOH - Electrolyte



Nominal Voltage 1,55 V
Typical Capacity C 44 mAh
 Load 20 kOhm, at 20°C down to 1.3 V

Weight (approx.) 0,61 g
Volume 0,14 ccm

Temperature Ranges

	min	max.
Storage	-10°C	65 °C
Discharge	-10°C	65°C

Dimensions

	min	max.
Diameter (A)	9,3	9,5
Height (B)	1,8	2,1

Segment Watch

Main Applications Watch
 Photo
 Electronic

Typical Capacities (at 20°C)

Discharge Type	Load	End Voltage:	1.3 V
Continuous 24h/d,7d/w Current [µA]:	20000 Ω 78	Time: Capacity [mAh]: Energy [MWh]:	563 h 44 68,7