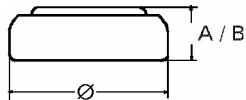


Data Sheet

Type Number 370
Designation IEC SR 69
System Silver oxide / Zinc /
 KOH - Electrolyte



Nominal Voltage 1,55 V
Typical Capacity C 30 mAh
 Load 20 kOhm, at 20°C down to 1.3 V

Weight (approx.) 0,6 g
Volume 0,14 ccm

Temperature Ranges

	min	max.
Storage	-10°C	65 °C
Discharge	-10°C	65°C

Dimensions

	min	max.
Diameter (A)	9,3	9,5
Height (B)	1,8	2,1

Segment Watch / High Drain

Main Applications Watch
 Photo
 Electronic

Typical Capacities (at 20°C)

Discharge Type	Load	End Voltage:	1.3 V
Continuous 24h/d,7d/w Current [µA]:	20000 Ω 78	Time: Capacity [mAh]: Energy [MWh]:	380 h 30 46

All Data contained herein is for single cells

For battery applications, performance data may vary from single cell data, depending on specific battery configuration

VARTA Microbattery GmbH, Daimlerstr. 1, D-73479 Ellwangen/Jagst
 Tel.: (+49) 7961/921-0, Telefax: (+49) 7961/921-553

Subject to change without prior notice!
 Date of issue: 07.08.2003