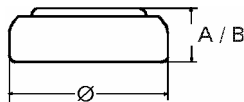


## Data Sheet



**Type Number** ..... 357  
**System** ..... Silver oxide / Zinc / KOH - Electrolyte

**Nominal Voltage** ..... 1,55 V  
**Typical Capacity C** ..... 145 mAh  
 Load 5,6 kOhm, at 20°C down to 1.2 V

**Weight (approx.)** ..... 2,33 g  
**Volume** ..... 0,51 ccm  
**Coding**..... Date of Manufacturing Month/Year

**Temperature Ranges** min max.  
 Storage ..... -10°C 65°C  
 Discharge ..... -10°C 65°C

**Dimensions** min max.  
 Diameter (∅)..... 11,25 11,60  
 Height (A/B) ..... 5,0 5,4

**Segment** ..... Watch / High Drain

**Main Applications** ..... Watch  
 Photo  
 Electronic Devices

### Typical Capacities (at 20°C)

Discharge Type	Load	End Voltage:	1.2 V
Continuous	5600 Ω	Time:	545 h
24h/d, 7d/w		Capacity [mAh]:	145
Current [μA]:	275	Energy [mWh]:	215

All Data contained herein is for single cells

For battery applications, performance data may vary from single cell data, depending on specific battery configuration

VARTA Microbattery GmbH, Daimlerstr. 1, D-73479 Ellwangen/Jagst  
 Tel.: (+49) 7961/921-0, Telefax: (+49) 7961/921-553

Subject to change without prior notice!

Date of issue: 2008-11-25