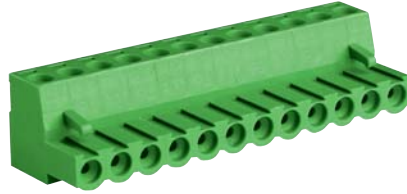








PA256HO – 5.08

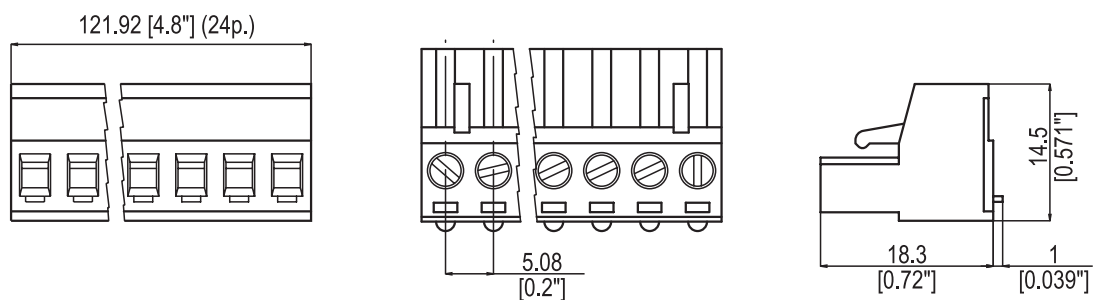
Pluggable terminal block



TECHNICAL DATA

	IEC	UL / CSA	
Pitch	5.08 mm	0.2"	
Poles	2 ÷ 24		
Versions	HO horizontal (wire parallel to the insertion direction)		
Ratings	450V - 10A	300V - 15A	
Wire size	2.5 sqmm	26 ÷ 12 AWG	
Working Temperature	-5 ÷ 85 °C (short time 115 °C)	23 ÷ 284 °F	
Plastic Material	Green Polyamide PA6.8, UL94-V0, CTI600V, GWT960 °C		
Metal Parts	Spring contact made in nickel plated phosphorous bronze; Cage insert made in nickel plated brass; M3 Screw made in zinc plated steel		
Screw Torque	0.5 Nm	7 lb-in	
Accessories	PA256C / CAR-IND		
Approvals	File Nr.	Ratings (sqmm/AWG – V – A – T)	Standard References
	E9396	2.5sqmm - 450V - 10A - 85 °C	EN60998-1; EN60998-2-1
	122258 ÜG	2.5sqmm - 400V - 10A - -5 ÷ 125 °C	DIN VDE 0627:1991-09
	E76048 vol. 1 sec. 7	26 ÷ 12AWG - 300V - 15A - 140 °C	UL1059
	LR 40455-8	26 ÷ 12AWG - 300V - 15A	CSA C22-2 N.158-1987; E.C.N 584B

DIMENSIONAL
DRAWING





PA256HO – 5.08

ACCESSORIES

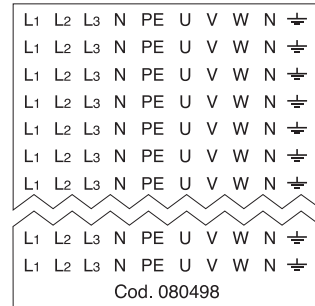
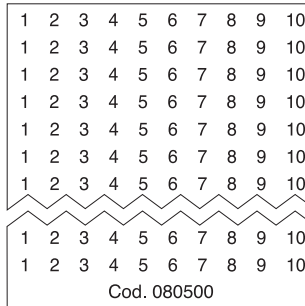
PA 256 C

Polarisation key used on the terminal block system PA256 in order to avoid incorrect connections, without losing poles, of the male holder PA 257 fitted with the polarisation key PA 257 C ; supplied in rows of 21 pieces.



CAR-IND

Self adhesive label of ten symbols.
Package of 10 sheets each with 25 labels.



PACKAGING

Type	P-N	Pack
PA 256/5.08/2	00119502	100
PA 256/5.08/3	00119503	100
PA 256/5.08/4	00119504	100
PA 256/5.08/5	00119505	100
PA 256/5.08/6	00119506	100
PA 256/5.08/7	00119507	100
PA 256/5.08/8	00119508	50
PA 256/5.08/9	00119509	50
PA 256/5.08/10	00119510	50
PA 256/5.08/11	00119511	50
PA 256/5.08/12	00119512	50
PA 256/5.08/13	00119513	50
PA 256/5.08/14	00119514	50
PA 256/5.08/15	00119515	50
PA 256/5.08/16	00119516	50
PA 256/5.08/17	00119517	50
PA 256/5.08/18	00119518	50
PA 256/5.08/19	00119519	50
PA 256/5.08/20	00119520	50
PA 256/5.08/21	00119521	50
PA 256/5.08/22	00119522	50
PA 256/5.08/23	00119523	50
PA 256/5.08/24	00119524	50

PA 256 C	00971436	50
----------	----------	----





PA256HO – 5.08

CAR-IND		
Type	P-N	Pack
L1, L2, L3, N, PE, U, V, W, N,	00080498	250
Neutral	00080499	250
1+ 10	00080500	250
11+ 20	00080501	250
21+ 30	00080502	250
31+ 40	00080503	250
41+ 50	00080504	250
51+ 60	00080505	250
61+ 70	00080506	250
71+ 80	00080507	250
81+ 190	00080508	250
91+ 100	00080509	250

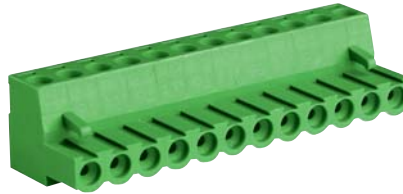
PALLETS
Europallets









PA256HO – 10.16

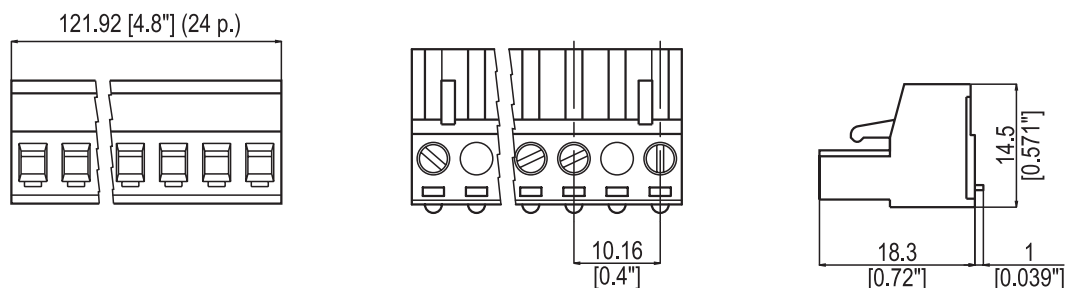
Pluggable terminal block



TECHNICAL DATA

	IEC	UL / CSA	
Pitch	10.16 mm	0.4"	
Poles	2 ÷ 12		
Versions	HO horizontal (wire parallel to the insertion direction)		
Ratings	750V - 10A	300V - 15A	
Wire size	2.5 sqmm	26 ÷ 12 AWG	
Working Temperature	-5 ÷ 85 °C (short time 115 °C)	23 ÷ 284 °F	
Plastic Material	Green Polyamide PA6.8, UL94-V0, CTI600V, GWT960 °C		
Metal Parts	Spring contact made in nickel plated phosphorous bronze; Cage insert made in nickel plated brass; M3 Screw made in zinc plated steel		
Screw Torque	0.5 Nm	7 lb-in	
Accessories	PA256C / CAR-IND		
Approvals	File Nr.	Ratings (sqmm/AWG – V – A – T)	Standard References
	E9396	2.5sqmm - 750V - 10A - 85 °C	EN60998-1; EN60998-2-1
	122258 ÜG	2.5sqmm - 400V - 10A - -5 ÷ 125 °C	DIN VDE 0627:1991-09
	E76048 vol. 1 sec. 7	26 ÷ 12AWG - 300V - 15A - 140 °C	UL1059
	LR 40455-8	26 ÷ 12AWG - 300V - 15A	CSA C22-2 N.158-1987; E.C.N 584B

DIMENSIONAL
DRAWING





PA256HO – 10.16

ACCESSORIES

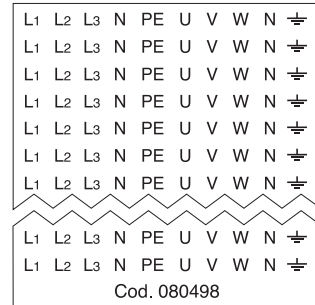
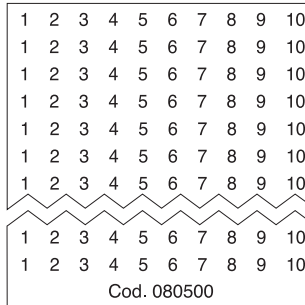
PA 256 C

Polarisation key used on the terminal block system PA256 in order to avoid incorrect connections, without losing poles, of the male holder PA 257 fitted with the polarisation key PA 257 C ; supplied in rows of 21 pieces.



CAR-IND

Self adhesive label of ten symbols.
Package of 10 sheets each with 25 labels.



PACKAGING

Type	P-N	Pack
PA 256/10.16/2	00119532	100
PA 256/10.16/3	00119533	100
PA 256/10.16/4	00119534	100
PA 256/10.16/5	00119535	50
PA 256/10.16/6	00119536	50
PA 256/10.16/7	00119537	50
PA 256/10.16/8	00119538	50
PA 256/10.16/9	00119539	50
PA 256/10.16/10	00119540	50
PA 256/10.16/11	00119541	50
PA 256/10.16/12	00119542	50
PA 256 C	00971436	50





PA256HO – 10.16

CAR-IND		
Type	P-N	Pack
L1, L2, L3, N, PE, U, V, W, N,	00080498	250
Neutral	00080499	250
1+ 10	00080500	250
11+ 20	00080501	250
21+ 30	00080502	250
31+ 40	00080503	250
41+ 50	00080504	250
51+ 60	00080505	250
61+ 70	00080506	250
71+ 80	00080507	250
81+ 190	00080508	250
91+ 100	00080509	250

PALLETS	
Europallets	

