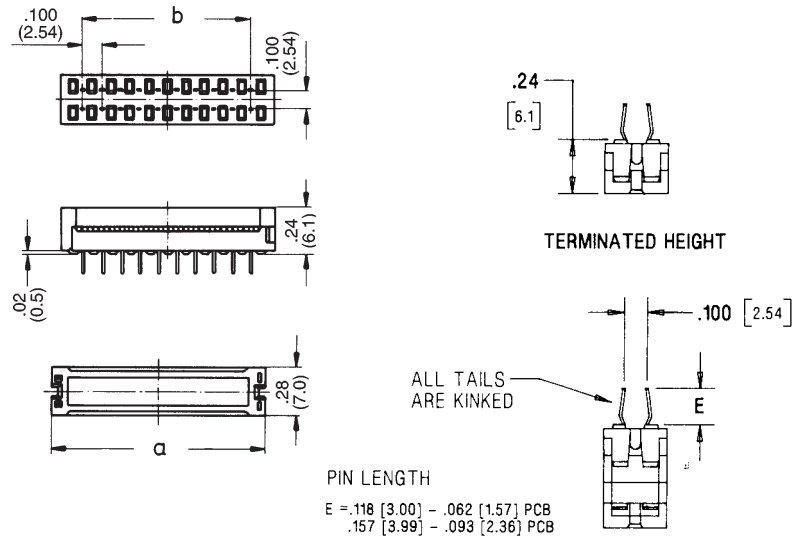
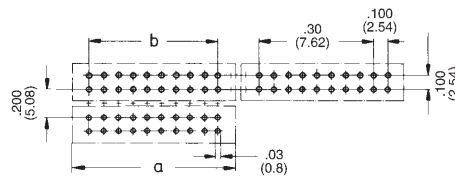


**Series 056
Transition
Connectors**

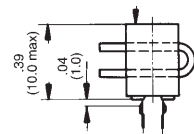
**6 to 64 contact
PCB Mount**



Printed Circuit Layout



Strain Relief (Optional)



No. of contacts / Dimensions

	6	10	14	16	20	26	34	40	50	60	64
a	.48" (12.2)	.68" (17.3)	.88" (22.4)	.98" (24.9)	1.18" (30.0)	1.48" (37.6)	1.88" (47.8)	2.18" (55.4)	2.68" (68.1)	3.18" (80.8)	3.38" (85.9)
b	.200" (5.08)	.400" (10.16)	.600" (15.24)	.700" (17.78)	.900" (22.86)	1.200" (30.48)	1.600" (40.64)	1.900" (48.26)	2.400" (60.96)	2.900" (73.66)	3.100" (78.74)

LAT-CON™ Series 056 – PC-board connectors in IDC-technique, one side open for lateral flat cable insertion, two rows, grid .100" (2,54 mm). Contact plating Sn/Ni.

Part numbers

No. of contacts 6, 10, 14, 16, 20, 26, 34, 40, 50, 60, 64, 80 □□ = Number of Circuits

Termination Methods		Contact Plating	Style/Kinked Tail	
Wave Solder	Insulation Displacement Connection	Sn/Ni		
			056-0 □□ - 393/K	056-0 □□ - 392/K